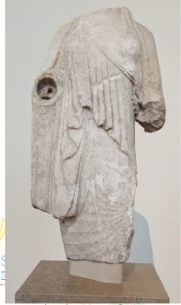


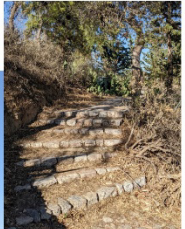
View of Mt Lycabettus from the top floor of the Acropolis Museum

View of Mt Lycabettus from the Acropolis



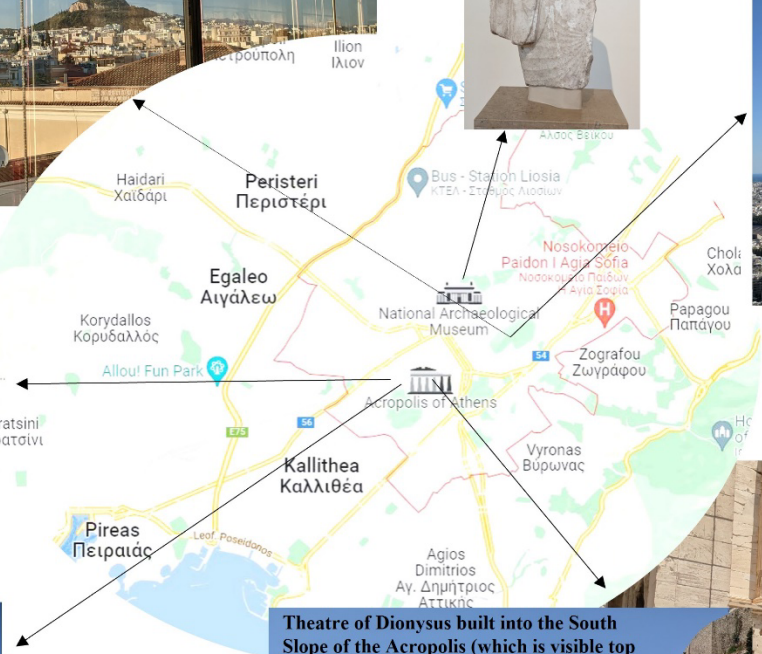
Right: *kore* statue, made from Parian marble and probably from the island of Paros

Climbing steps on the path up Mt Lycabettus



View from Mt Lycabettus looking to the southwest

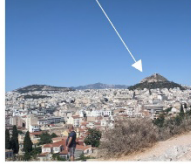
ACROPOLIS



Above left: silo model from ninth-century BC grave of the 'Rich Athenian Lady'; above right: Temple of Hephaestion in Ancient Agora; below: view of Acropolis from the Ancient Agora of Athens



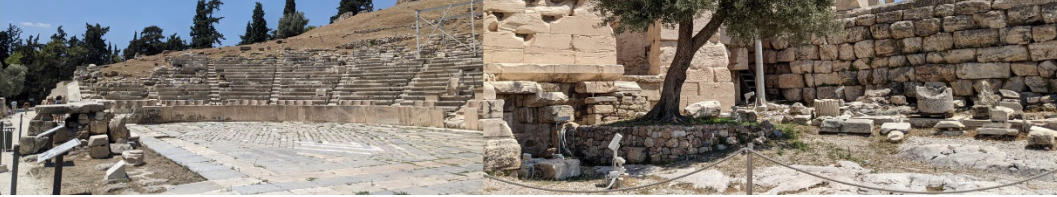
MT LYCABETTUS



View of Acropolis from Areopagus



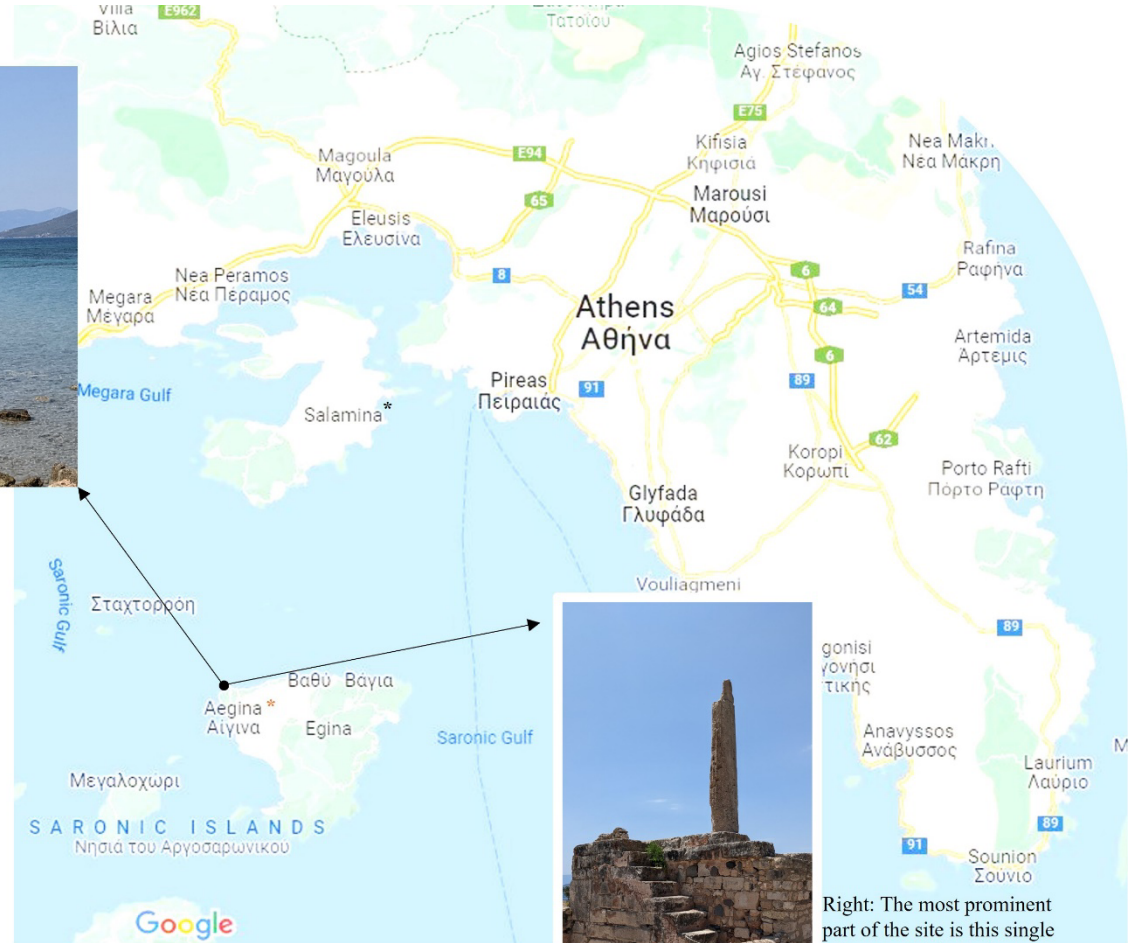
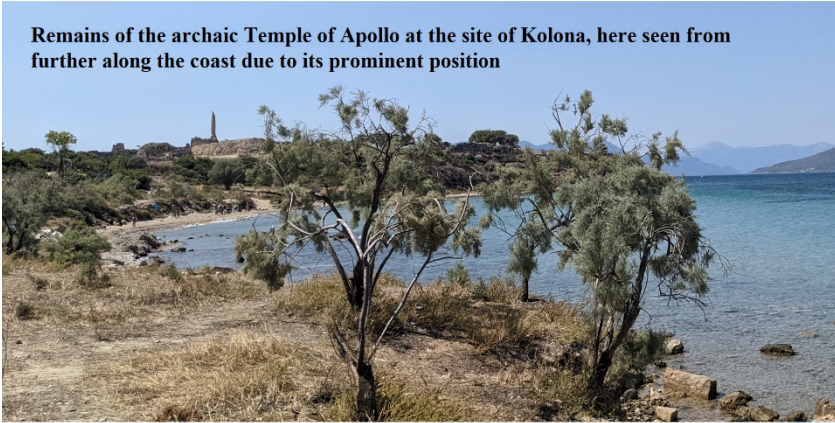
Theatre of Dionysus built into the South Slope of the Acropolis (which is visible top right)



Erechtheion (left), Parthenon (far right) and olive tree on the Acropolis



Remains of the archaic Temple of Apollo at the site of Kolona, here seen from further along the coast due to its prominent position



View of the Saronic Gulf from the air, with the Greek mainland in the foreground



Right: The most prominent part of the site is this single column, which can be seen from some distance away, including when approaching the port from the sea