



## **Student Equality Data**

The following data is taken from the University of Oxford's 2020 Student Statistics snapshot.

It includes the following:

- I. Undergraduate Admissions data (based on a 3 year cycle)
- II. Overview of Equality Figures (On Course)
- III. Sex, Ethnicity and Disability Figures by Division and Programmes (On Course)

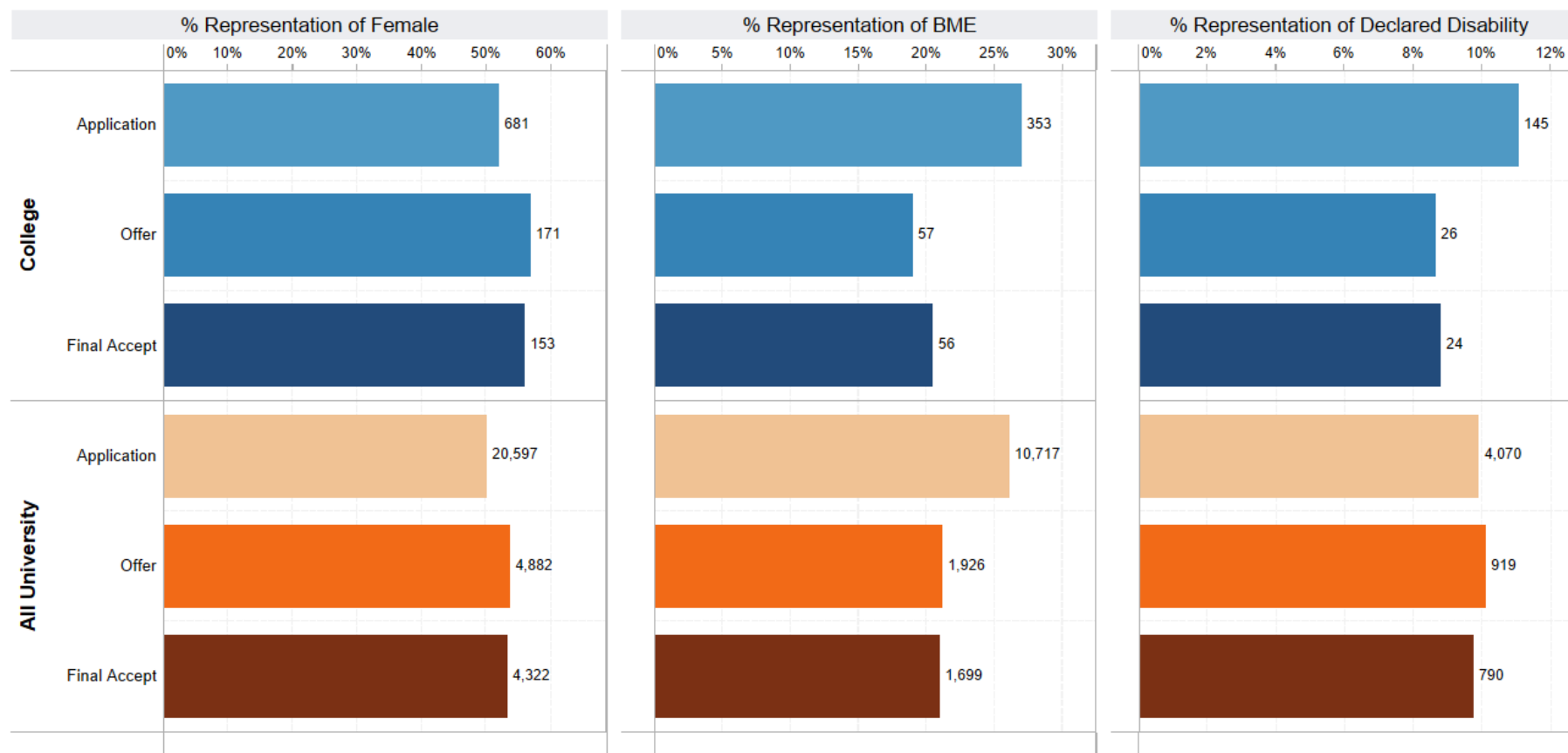
## I. Undergraduate Admissions (College Vs All University)

Ucas Cycle  
2018 to 2020

Domicile: UK / EU / Non-EU  
UK

These graphs show the proportional representation of each demographic group, out of the total population *at each stage* (not of the original *applicant* population). Therefore, if the demographic group were as successful as its peers, the bars would remain of constant size. Shrinking bars indicate that the demographic group is less successful than other applicants.

The figures and percentages are based on the *total* numbers across all the UCAS Cycles selected.

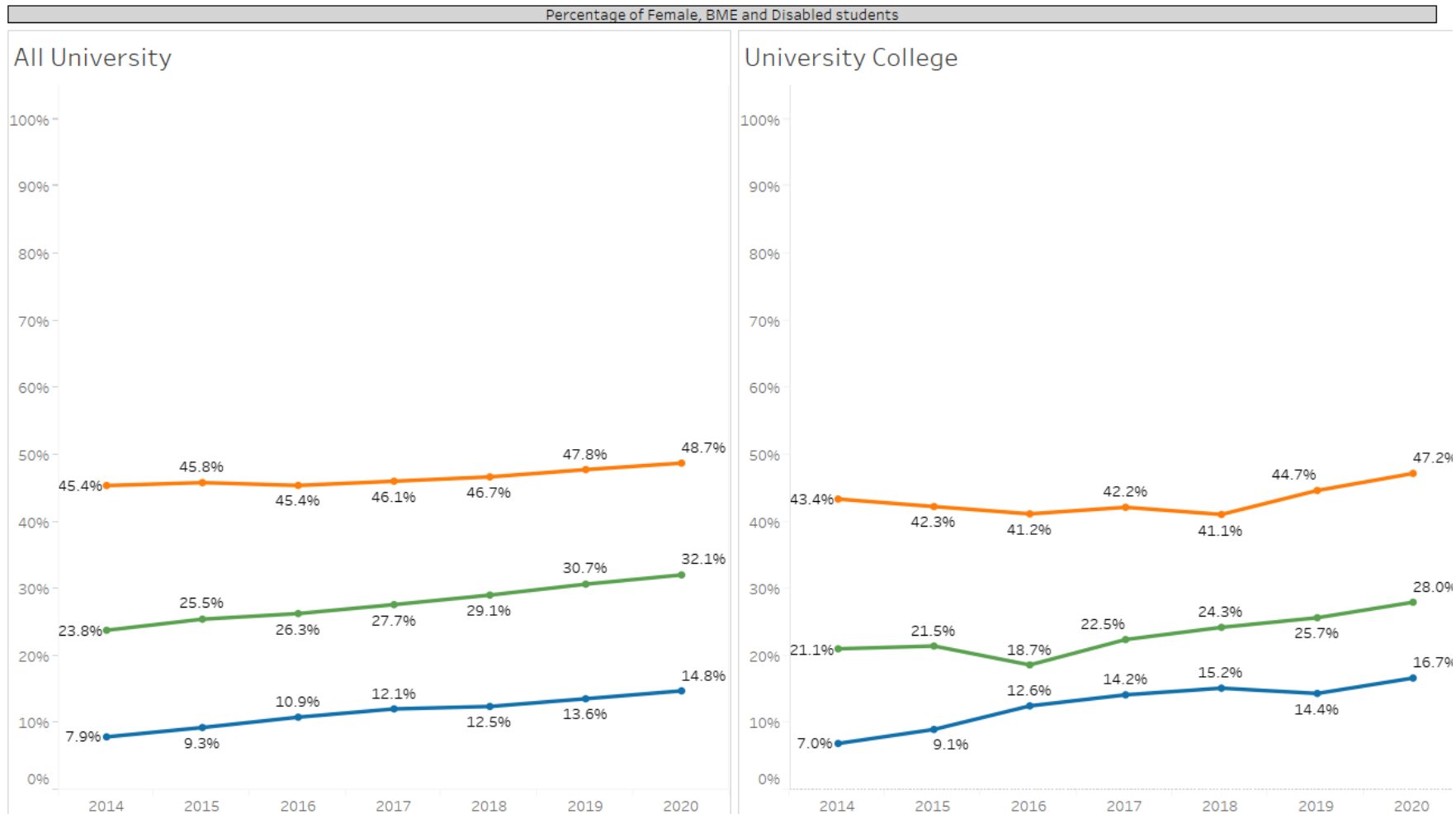


NB : UCAS do not ask EU and Non-EU applicants for their Ethnicity. Therefore, only UK applicants appear on the BME - White chart, even if the Domicile filter is set to include EU and Non-EU.

In contrast, all applicants (UK, EU and Non-EU domiciled) are asked to submit information about their Sex and any Disabilities, so including EU and/or Non-EU will change the relevant charts.

All data are taken from Undergraduate Admissions Definitive Data Snapshot of Jan 2021

## II. Overview of Equality Figures – On Course



The charts show the changing percentage of Female, BME (Black and minority ethnic) and Disabled students over time.

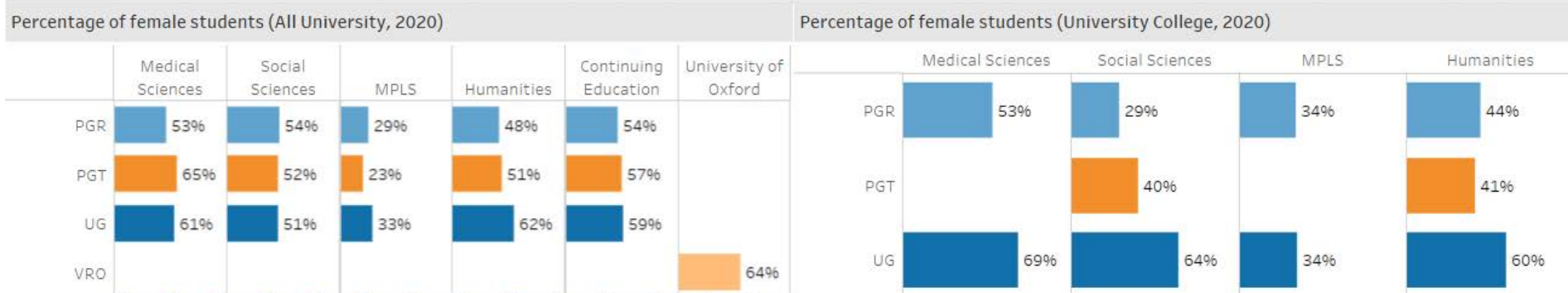
Data is from the 01/12/2020 Student Statistics snapshot. Report prepared by: sdma@admin.ox.ac.uk

% Female; BME; Disability

### III. Sex - Division and Programme Type Overview

All University (2020)																	
Sex	Medical Sciences			Social Sciences			MPLS			Humanities			Continuing Education			University of Oxf..	Grand Total
	PGR	PGT	UG	PGR	PGT	UG	PGR	PGT	UG	PGR	PGT	UG	PGR	PGT	UG	VRO	
Female	839	248	1,136	714	1,726	1,097	790	171	1,284	540	456	2,536	57	485	339	169	12,587
Male	739	136	714	608	1,610	1,040	1,913	575	2,597	577	446	1,531	49	365	236	97	13,233
Total	1,578	384	1,850	1,322	3,336	2,137	2,703	746	3,881	1,117	902	4,067	106	850	575	266	25,820
Female	53.2%	64.6%	61.4%	54.0%	51.7%	51.3%	29.2%	22.9%	33.1%	48.3%	50.6%	62.4%	53.8%	57.1%	59.0%	63.5%	48.7%
Male	46.8%	35.4%	38.6%	46.0%	48.3%	48.7%	70.8%	77.1%	66.9%	51.7%	49.4%	37.6%	46.2%	42.9%	41.0%	36.5%	51.3%
Total	100.0%	100.0%	100.0%	100.0%	100.0%	100.0%	100.0%	100.0%	100.0%	100.0%	100.0%	100.0%	100.0%	100.0%	100.0%	100.0%	100.0%

University College (2020)												
Sex	Medical Sciences		Social Sciences			MPLS		Humanities			Grand Total	
	PGR	UG	PGR	PGT	UG	PGR	UG	PGR	PGT	UG		
Female	23	45	8	8	38	30	61	11	7	74	305	
Male	20	20	20	12	21	58	116	14	10	50	341	
Total	43	65	28	20	59	88	177	25	17	124	646	
Female	53.5%	69.2%	28.6%	40.0%	64.4%	34.1%	34.5%	44.0%	41.2%	59.7%	47.2%	
Male	46.5%	30.8%	71.4%	60.0%	35.6%	65.9%	65.5%	56.0%	58.8%	40.3%	52.8%	
Total	100.0%	100.0%	100.0%	100.0%	100.0%	100.0%	100.0%	100.0%	100.0%	100.0%	100.0%	



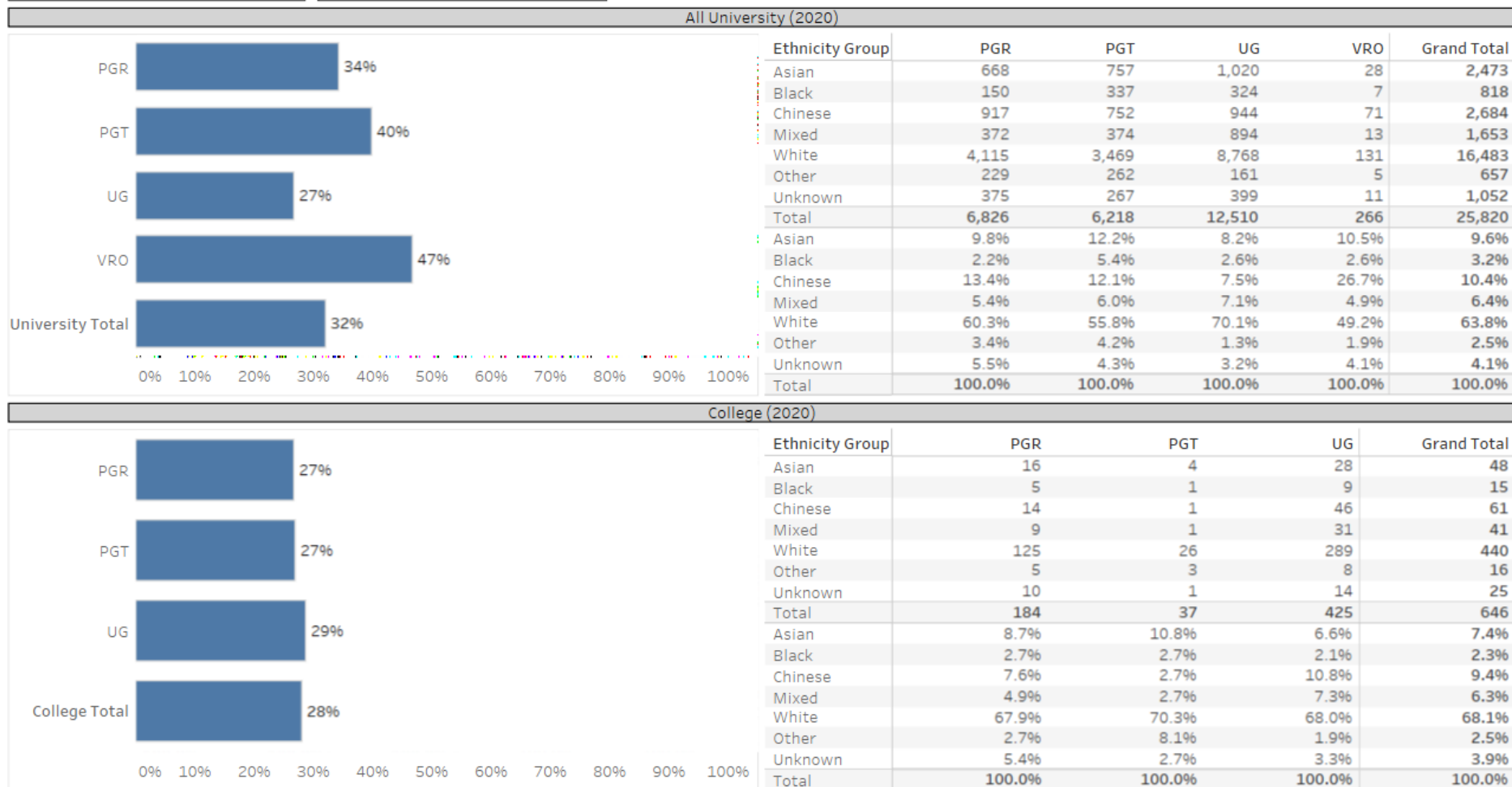
The bar charts show the % of female students by Division and programme type in the University (left chart) and individual college (right chart). The tables show more detail. The upper table shows the figures for the whole university, the lower table shows the information for an individual college. Data is from the 01/12/2020 Student Statistics snapshot. Report prepared by: sdma@admin.ox.ac.uk

**Award Programme Type**  
■ PGR  
■ PGT  
■ UG  
■ VRO

### III. Ethnicity – Programme Type

Select Year 2020	Domicile (EU Group) All
---------------------	----------------------------

In 2020, 181 of the college's 646 students (28.0%) were BME



The bar charts above show the % of BME students by programme type in the University (top chart) and individual college (lower chart).

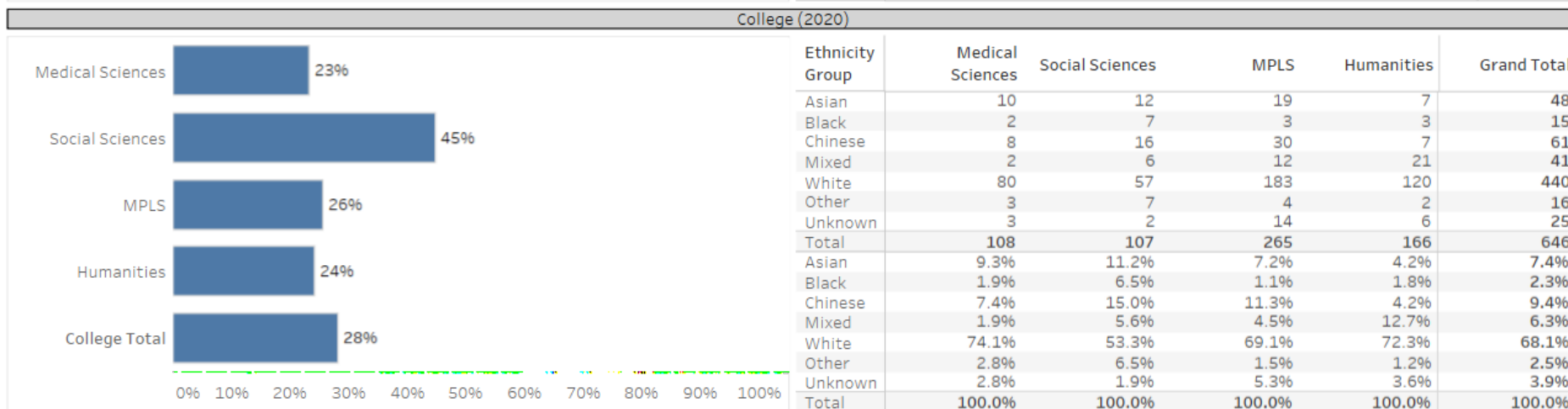
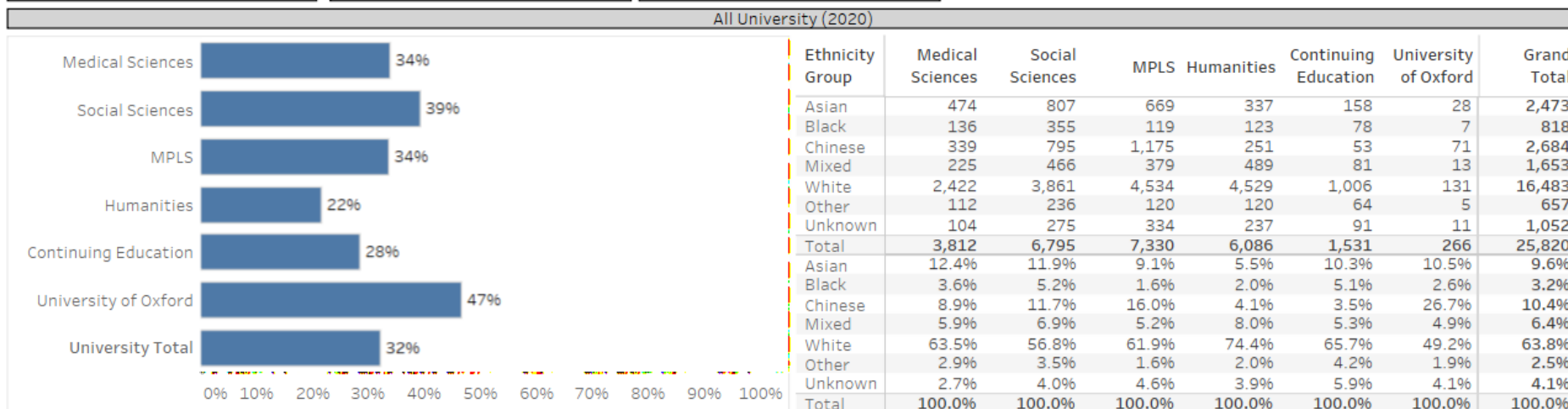
Data is from the 01/12/2020 Student Statistics snapshot. Report prepared by: sdma@admin.ox.ac.uk

BME = Black and minority ethnic  
 PGR = Postgraduate Research  
 PGT = Postgraduate Taught  
 UG = Undergraduate  
 VRO = Visiting, Recognised, Other

### III. Ethnicity – Division Overview

Select Year 2020	Domicile (EU Group) All	Award Programme Type All
---------------------	----------------------------	-----------------------------

In 2020, 181 of the college's 646 students (28.0%) were BME



The bar charts above show the % of BME students by Division in the University (top chart) and individual college (lower chart).  
Data is from the 01/12/2020 Student Statistics snapshot. Report prepared by: sdma@admin.ox.ac.uk

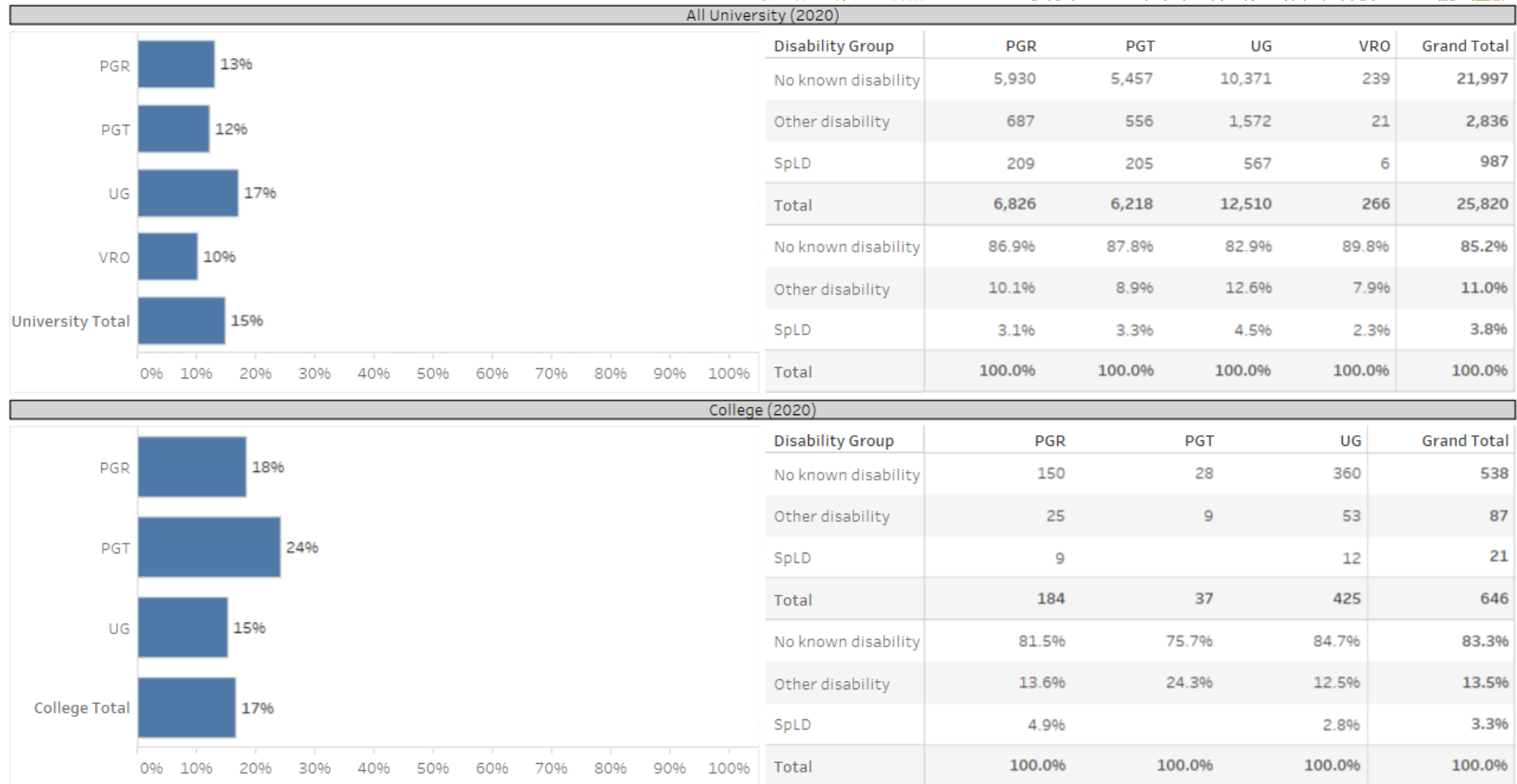
BME = Black and minority ethnic (N.B. All Ethnic Groups besides White and Unknown / refused are classified as BME), VRO = Visiting, Recognised, Other

### III. Disability - Programme Type Overview

Select Year  
2020

## University College

In 2020, 108 of the college's 646 students (16.7%) had a declared disability



The bar charts above show the % of BME of students with a declared disability by programme type in the University (top chart) and individual college (lower chart).  
Data is from the 01/12/2020 Student Statistics snapshot. Report prepared by: sdma@admin.ox.ac.uk

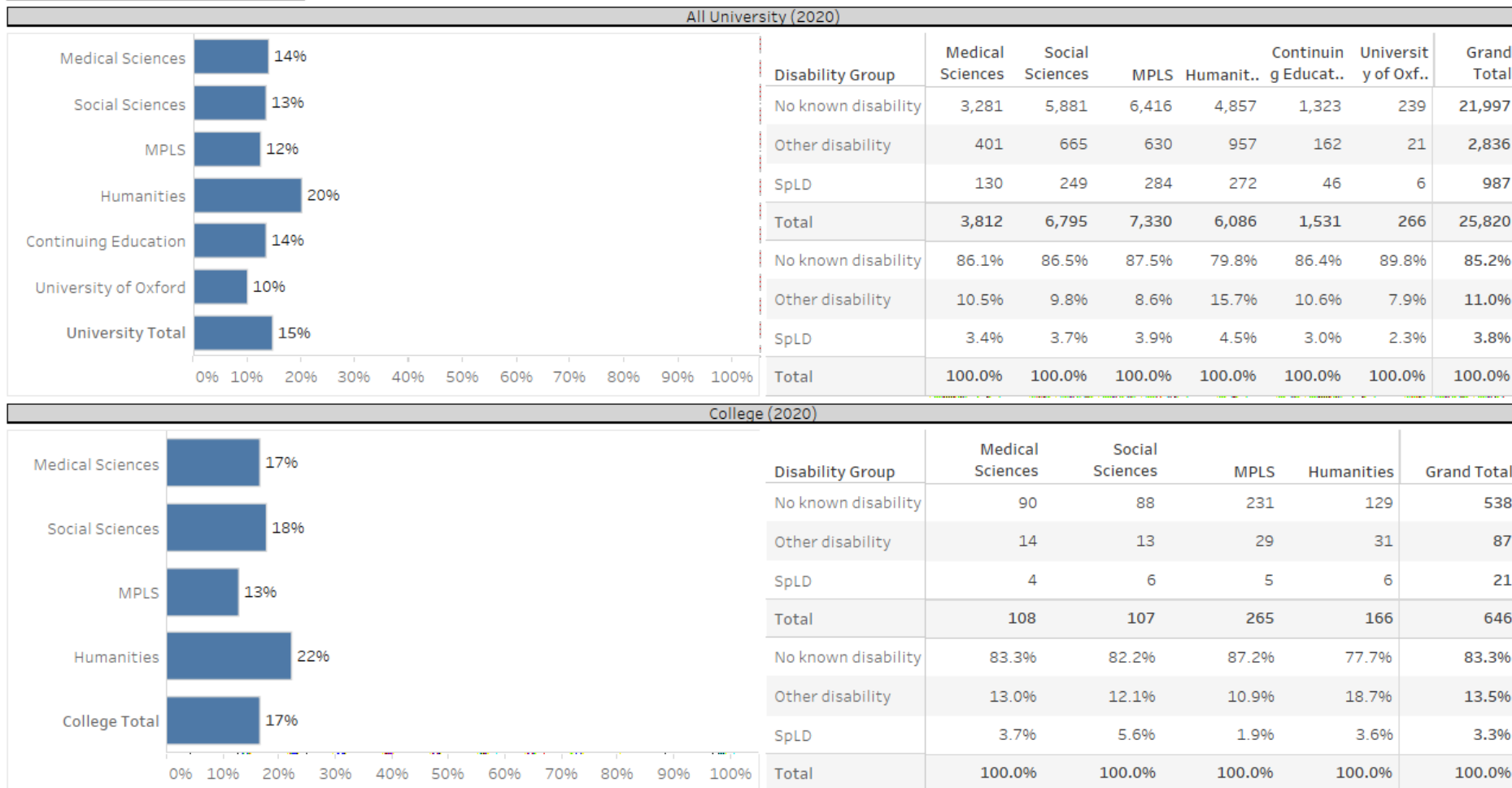
SpLD = Specific learning disability (includes dyslexia, dyspraxia, ADHD, ADD)  
Other disability = any other disability, and students with multiple disabilities  
No disability = Not known, refused, or Information Not Sought

### III. Disability - Division Overview

Select Year  
2020

## University College

In 2020, 108 of the college's 646 students (16.7%) had a declared disability



The bar charts above show the % of students with a declared disability by Division in the University (top chart) and individual college (lower chart).  
Data is from the 01/12/2020 Student Statistics snapshot. Report prepared by: sdma@admin.ox.ac.uk

SpLD = Specific learning disability (includes dyslexia, dyspraxia, ADHD, ADD)  
Other disability = any other disability, and students with multiple disabilities  
No disability = Not known, refused, or Information Not Sought